

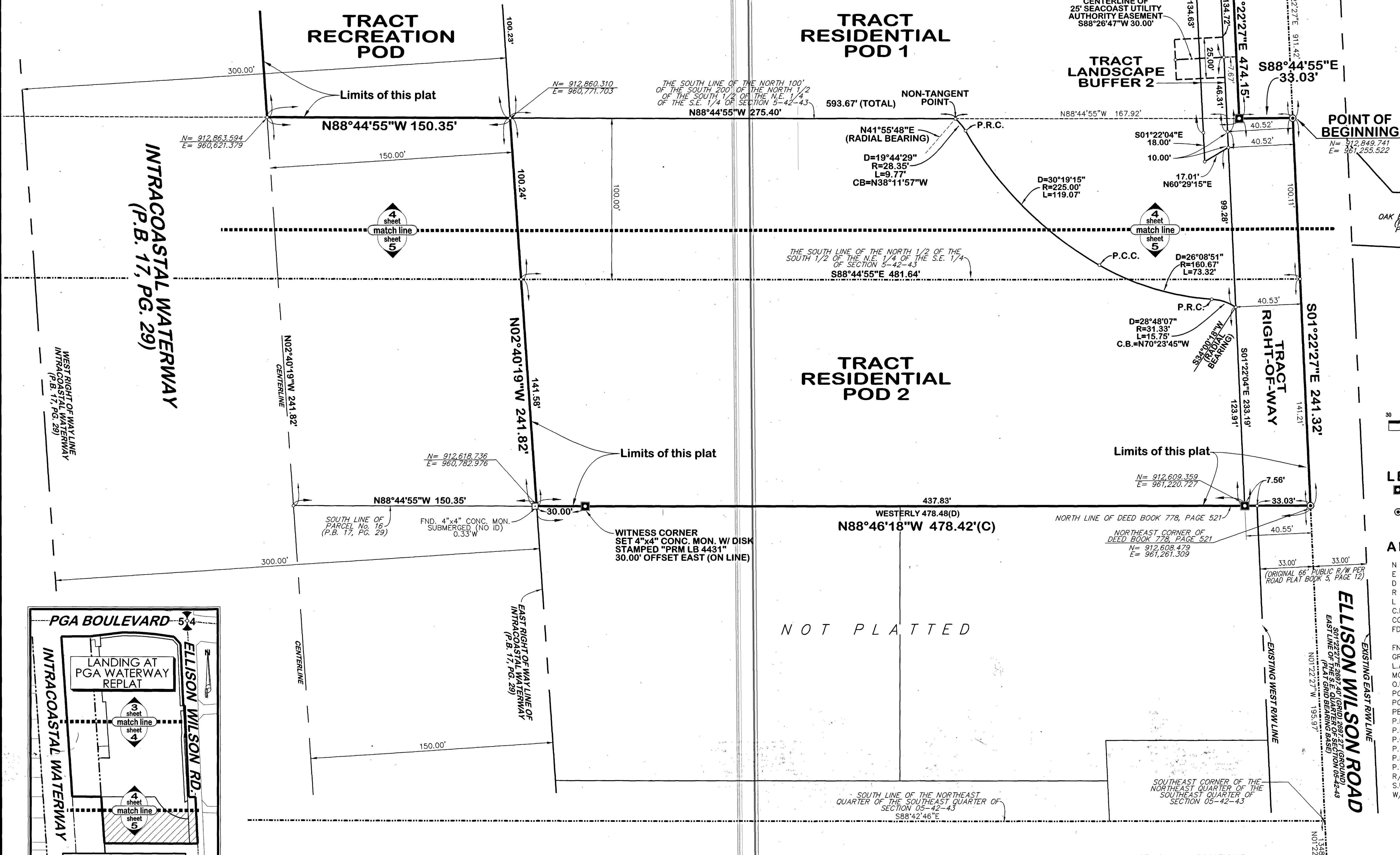
154

# LANDING AT PGA WATERWAY - REPLAT

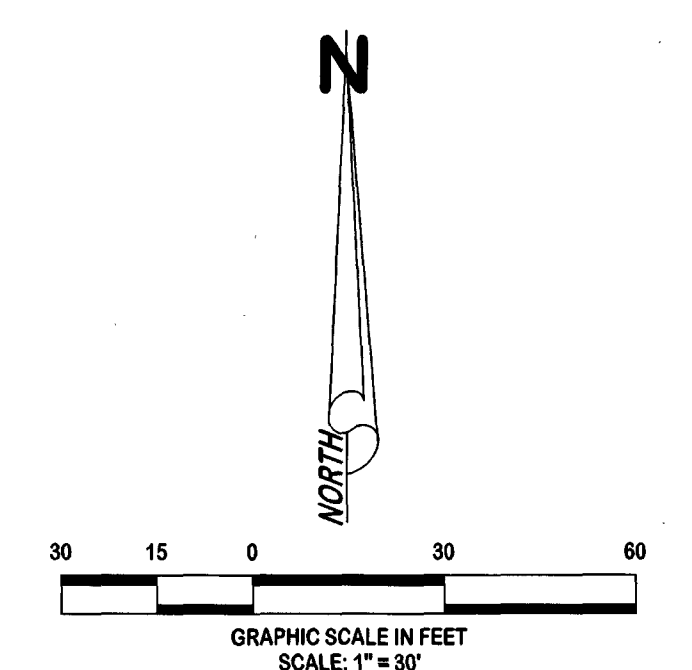
BEING A REPLAT OF THE LANDING AT PGA WATERWAY, AS RECORDED IN PLAT BOOK 136, PAGES 39 THROUGH 42,  
PUBLIC RECORDS OF PALM BEACH COUNTY, FLORIDA AND AN UNPLATTED PORTION  
OF THE SOUTHEAST QUARTER OF SECTION 5, TOWNSHIP 42 SOUTH, RANGE 43 EAST  
CITY OF PALM BEACH GARDENS, PALM BEACH COUNTY, FLORIDA

SEPTEMBER 2024

SHEET 5 OF 5



PARCEL 6  
OAK BROOK CORPORATE CENTRE  
(P.B. 84, PGS. 109-111)  
PRIVATE PLATTED ROAD



**LEGEND:**

- = DENOTES SET "PRM" SET 4"x4" CONC. MON. W/ DISK STAMPED "PRM LB 4431"
- ⊙ = DENOTES SET "PRM" SET MAG NAIL & DISK STAMPED "PRM LB 4431"

**ABBREVIATIONS:**

- N = NORTHING GRID COORDINATE
- E = EASTING GRID COORDINATE
- D = CURVE'S DELTA ANGLE
- R = CURVE'S RADIUS
- L = CURVE'S ARC LENGTH
- C.B. = CURVE'S CHORD BEARING
- CONC. = CONCRETE
- FDOT = FLORIDA DEPARTMENT OF TRANSPORTATION
- FND. = FOUND
- GRID = STATE PLANE BEARING & DISTANCE
- L.A.E. = LIMITED ACCESS EASEMENT
- MON. = MONUMENT
- O.R.B. = OFFICIAL RECORD BOOK
- PG. = PAGE
- PGS. = PAGES
- PBCo. = PALM BEACH COUNTY
- P.R.M. = PERMANENT REFERENCE MONUMENT
- P.B. = PLAT BOOK
- P.C.C. = POINT OF COMPOUND CURVATURE
- P.C. = POINT OF CURVATURE
- P.R.C. = POINT OF REVERSE CURVATURE
- P.T. = POINT OF TANGENCY
- R/W = RIGHT OF WAY
- S.U.A. = SEACOAST UTILITY AUTHORITY
- W/ = WITH



NOT PLATTED

**LIDBERG LAND SURVEYING, INC.**  
675 West Indiantown Road, Suite 200, Jupiter, Florida 33458 TEL. 561-746-9454

CAD. K.A.U.S.T \ 054243 \ 21-076 \ 21-076E-306B \ 21-076E-306B.DGN	JOB 21-076E-306B		
REF.	FB.	PG.	DATE SEPTEMBER 2024
F.L.D.			D.W.C. D21-076PP
OFF. CASASUS			
C.K.D. K.J.B.	SHEET 5	OF 5	

**STATE PLANE NOTES:**

- 1.) ALL DISTANCES SHOWN HEREON ARE GROUND DISTANCES, UNLESS OTHERWISE NOTED.
- 2.) SCALE FACTOR: 1.000047877
- 3.) PROJECTION: TRANSVERSE MERCATOR
- 4.) ZONE: FLORIDA EAST
- 5.) DATUM: NORTH AMERICAN DATUM OF 1983 / 1990 ADJUSTMENT
- 6.) GROUND DISTANCE X SCALE FACTOR = GRID DISTANCE
- 7.) UNITS: US SURVEY FEET

SOUTHEAST CORNER OF SECTION 5,  
TOWNSHIP 42 SOUTH,  
RANGE 43 EAST  
N=911064.320  
E=961298.349  
(FND. P.B.Co. BRASS DISK IN CONCRETE)

THIS INSTRUMENT WAS PREPARED BY KENNETH J. BUCHANAN P.S.M., IN AND FOR THE OFFICES OF LIDBERG LAND SURVEYING, INC., 675 WEST INDIANTOWN ROAD, SUITE 200, JUPITER, FLORIDA 33458. TELEPHONE (561) 746-8454.